

User Manual
EN V1.0



3-Axis Gimbal for Mirrorless Camera

GuiLin FeiYu Technology Incorporated Company

1. Installation

Attention: Please complete the following instructions before power on the gimbal



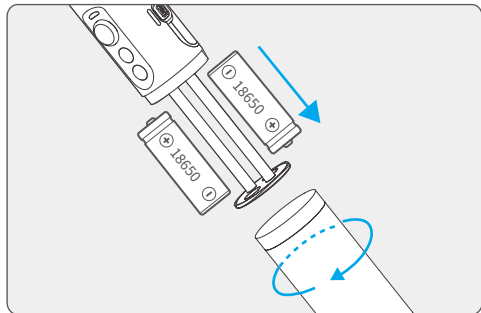
Attention

As the stabilizer comes with boot self-test function, such as the stabilizer due to no load, the balance adjustment is less than ideal, or due to the intensity adjustment does not fit and other reasons cause the stabilizer vibration is too large, the gimbal will automatically enter the standby mode.

1 Insert the batteries

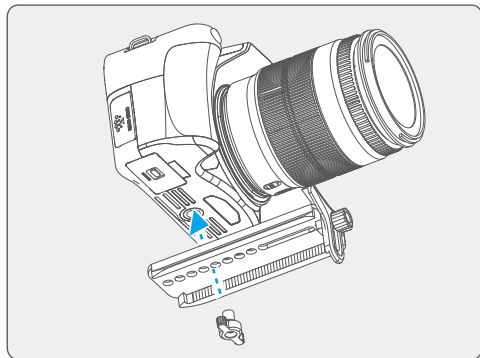
Prior to use, please be sure to fill the battery.

Remove the handle, insert 2 pcs 18650 batteries and tighten the screw.

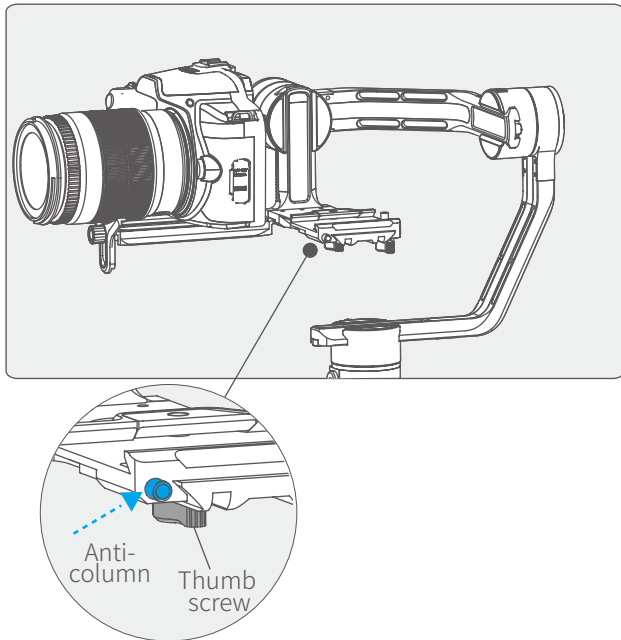


2 Installation of the camera

(1) Align the adjustment skateboard to the 1/4 screw hole at the bottom of the camera and place to the appropriate position, then tighten the screw.



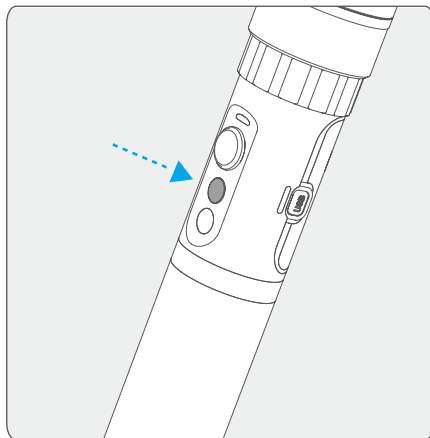
(2) After installing the camera, first press and hold the anti-column, place the adjustment skateboard with the camera mounted on the clamping plate, and tighten the fixing screws.



3 Power on / off

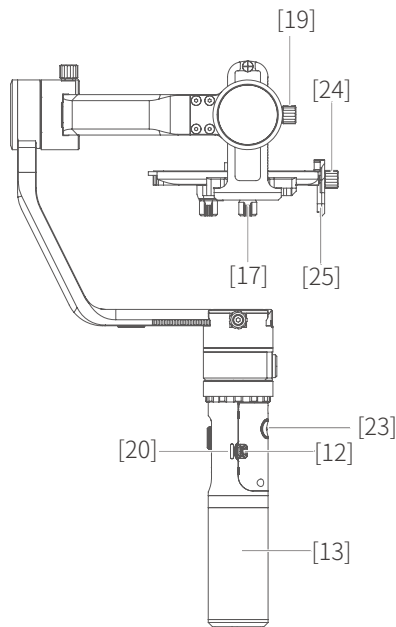
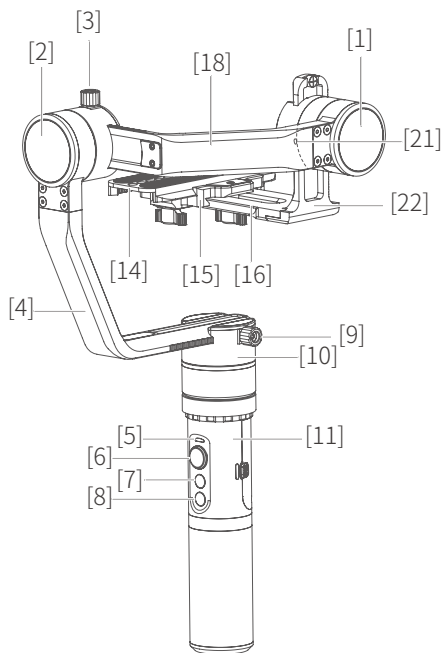
Power on: Long press Function button and release it until the green light is on.

Power off: Long press Function button and release it until the green light changes from quick flashing to constant.



In case of low battery, the indicator will light red and flash 3 times every 5 seconds. Please charge gimbal or replace the battery.

2. Product Overview

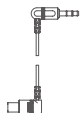


- [1] Tilting axis
- [2] Rolling axis
- [3] Rolling lock screw
- [4] Vertical arm
- [5] Indicator
- [6] Joystick
- [7] Function button
- [8] Shutter button
- [9] Heading lock screw
- [10] Panning axis
- [11] Socket connector
- [12] USB interface
- [13] Handle
- [14] Up adjustment skateboard
- [15] Down adjustment skateboard
- [16] Adapter(Clamping plate)
- [17] Thumb screw
- [18] Cross arm
- [19] Tilting lock screw
- [20] Charging indicator
- [21] Shutter cable socket
- [22] Sliding arm
- [23] Trigger button
- [24] Sliding arm
- [25] Function shortcuts

Basic accessories



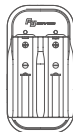
USB cable
(micro port)



SONY shutter line
(3.5 audio to multi)



Batteries
(Type: 18650)



Smart charger



Thumb screw



Camera support
frame screws



Camera support
frame

Advanced accessories (Double-hand foldable set)



1/4 screw

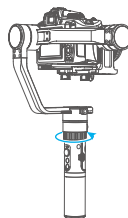
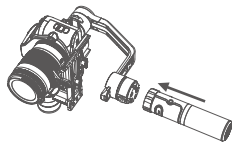


Code shoe

Installation way

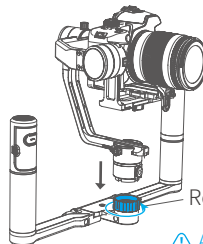
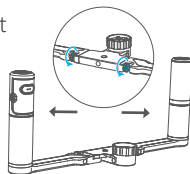
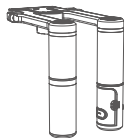
Single-armed installation

α2000 Single Handle



Dual Handheld Installation

α2000 Double-hand foldable set



Retaining ring

⚠ After installation, please
tighten the retaining ring

3. Modes / Functions

1 Working Modes

Panning Mode

Tilting and rolling direction are fixed, and the camera lens moves according to the hand movement of the user.

* Boot default mode: [Panning mode](#)

Panning and Tilting Mode

The rolling direction is fixed, and the camera lens moves according to the hand movement of the user.

Lock Mode

The orientation of the camera is fixed.

Other Functions

Reset

Reset the tilting axis of the gimbal to initial orientation and initial mode

Charge

USB charge Input: 5V/1A

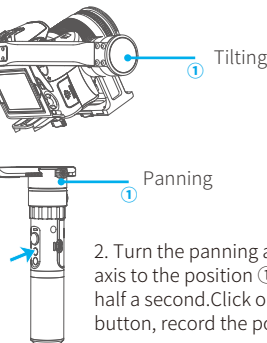
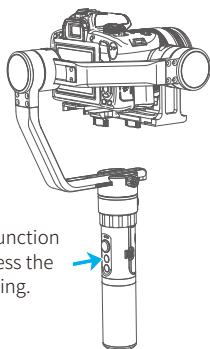
2 Operating Instructions of Button

Function button	Function	Explanation
Single tap	Panning mode	Single tap to switch to panning mode
Double tap	Panning and Tilting mode	Under panning and tilting mode, single tap to switch to panning mode
Triple tap	Rotate 180° in horizontal	Make the camera lens rotate 180 ° (The rotation angle is restored by the reset function)
Quadruple tap	Autorotation Mode	Quadruple tap to enter autototation mode
Fifth tap	Initialization	Single tap again to awake the gimbal, or triple tap to initialize the gimbal
Trigger button	Function	Explanation
Long press	Lock	In the panning mode or panning and pitch mode, press and hold lock shortcuts to enter the lock mode, release to return before mode.
Double tap	Reset	Reset the tilting axis of the gimbal to initial orientation and initial mode

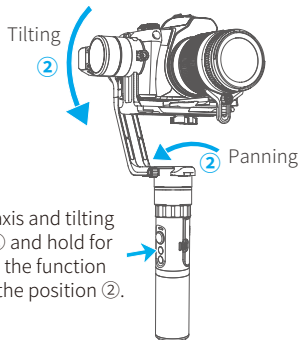
3 Autorotation Mode

Four times clicks on function button, gimbal will access the autorotation mode setting. Manually turn the gimbal to an initial position, then click again on function button for recording it. Manually turn the gimbal to end position, then click the function button again for recording it. Gimbal will turn to the initial position and begin autorotation.

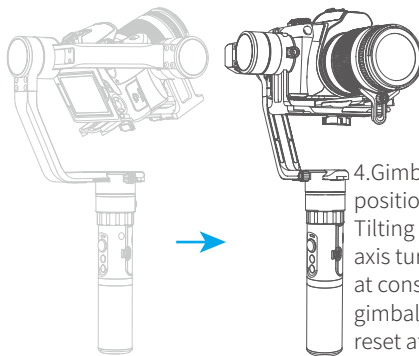
1. Four times clicks on function button, gimbal will access the autorotation mode setting.



2. Turn the panning axis and tilting axis to the position ① and hold for half a second. Click on function button, record the position ①.



3. Turn the panning axis and tilting axis to the position ② and hold for half a second. Click on the function button again, record the position ②.



4. Gimbal will recover to position ① automatically. Tilting axis and panning axis turn to position ② at constant speed. The gimbal is automatically reset after the end.

gimbal autorotation function with mirrorless camera delay photography function can be used to achieve a very special mobile delay photography. The speed setting is made by Feiyu ON App.

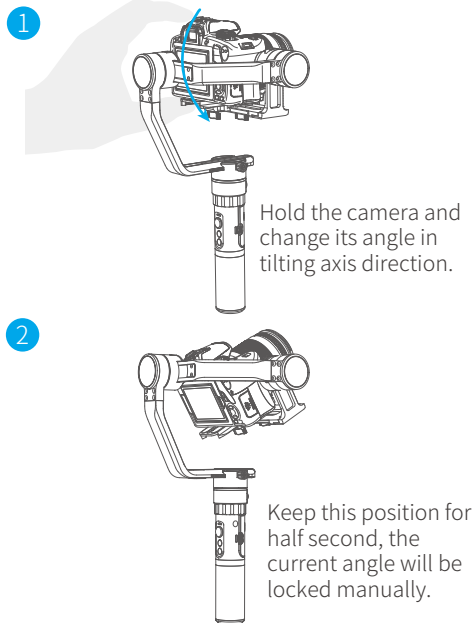
Annexed parameter table:

gimbal speed setting reference table

$\alpha 2000$ Rotate Speed
12 seconds / turn
18 seconds / turn
24 seconds / turn
30 seconds / turn
1 minutes / turn
2 minutes / turn
4 minutes / turn
8 minutes / turn
15 minutes / turn
30 minutes / turn
1 hours / turn (default)
4 hours / turn
8 hours / turn

4. Manual Lock

Manual lock , pull to the specified angle to stay half a second can be lock the current angle.(The tilting axis and panning axis in the lock mode can be manual lock and the tilting axis can be manual lock in the panning mode.)Take the tilting axis as an example:



5. Operation

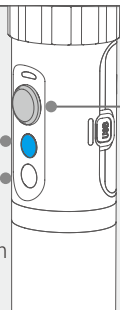
Function Button

- ▶ Power on / off
- ▶ Switch the working mode
- ▶ Other functions

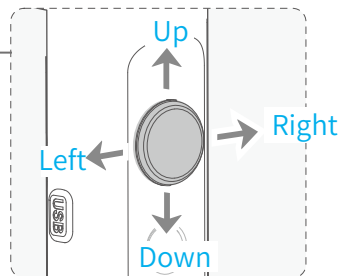
Identify the current mode of the gimbal by the indicator

Shutter button

Click the shutter button to focus, click again within 3s to take pictures.
If there is no operation within 3s, the focus state is cleared (need connect a camera control cable)



Explanation of joystick control

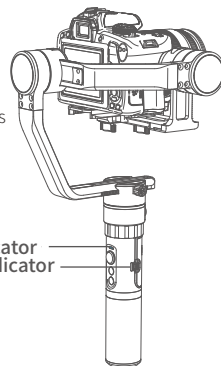


Explanation of LED indicator status

LED status	Mode / Status
Blue light flashes once	Panning mode
Blue light flashes twice	Panning and Tilting mode
Blue light constant on	Lock mode / Initialize the gimbal
Blue light keeps flashing	Initialization failure / Malfunction
Red light flashes three times	Low battery
Red light keeps flashing	Entering standby / Entering power off

Explanation of Charging indicator status

LED status	Mode / Status
Blue light, red light off	Stop charging
The blue and red light are flashing (If the two batteries voltage difference between the larger, the process takes a long time)	The voltage of two batteries balance adjustment
The blue and red light	Charging

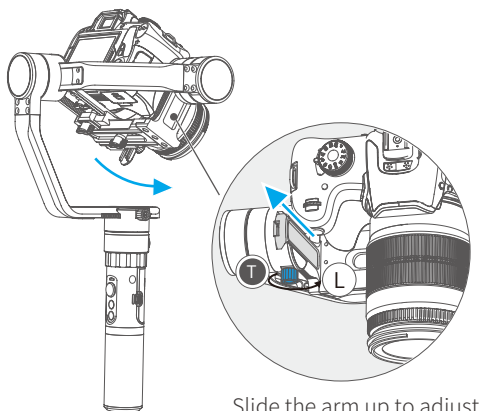


6. Balance Adjustment

STEP 1 Balance adjustment of the tilting axis

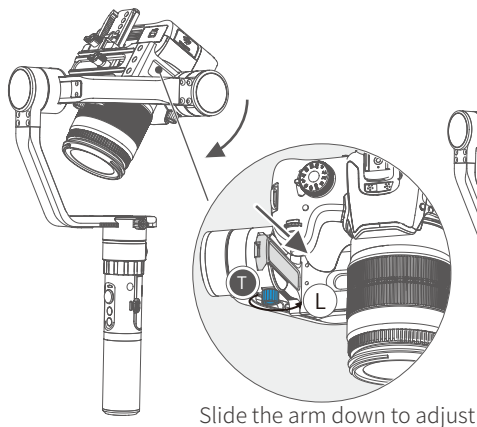
(1) Adjust the camera's pitch axis Vertical center of gravity: place the camera lens down vertically, keep the arm horizontal and observe the camera lens status. Adjust the arm up and down to adjust the balance.
(See below)

* After adjustment, be sure to tighten the lock screw.



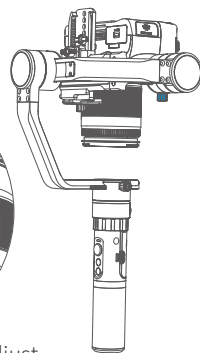
Slide the arm up to adjust

Camera forward



Slide the arm down to adjust

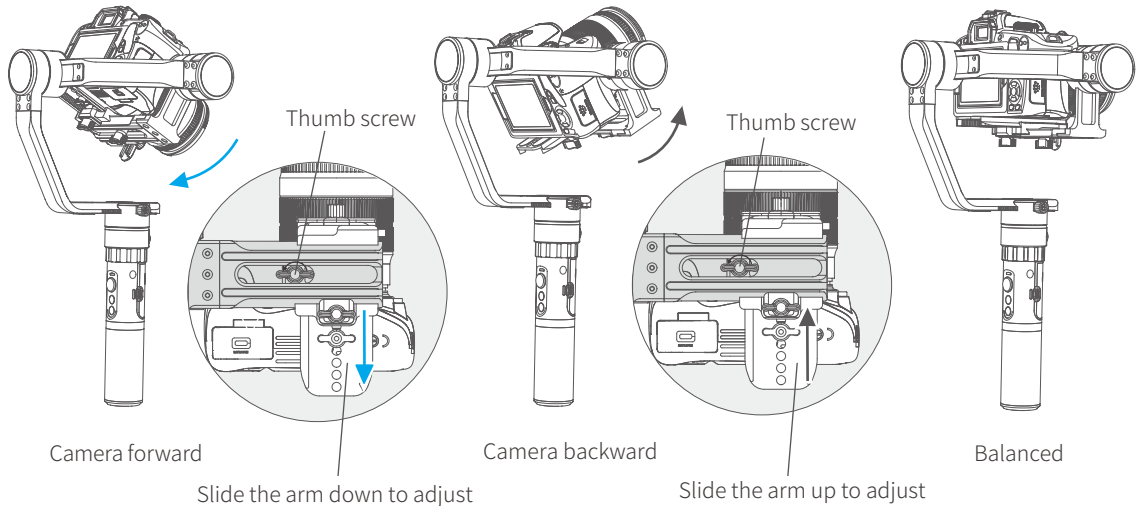
Camera backward



Normal vertical

(2) Adjust the camera's pitch axis Horizontal center of gravity position: place the camera lens horizontally forward, keep the arm horizontal and observe the lens status. Loosen the screw on the bottom of the camera and adjust the balance by adjusting the slider to up and down at the bottom of the camera. (See below)

* After adjustment, be sure to tighten the lock screw.

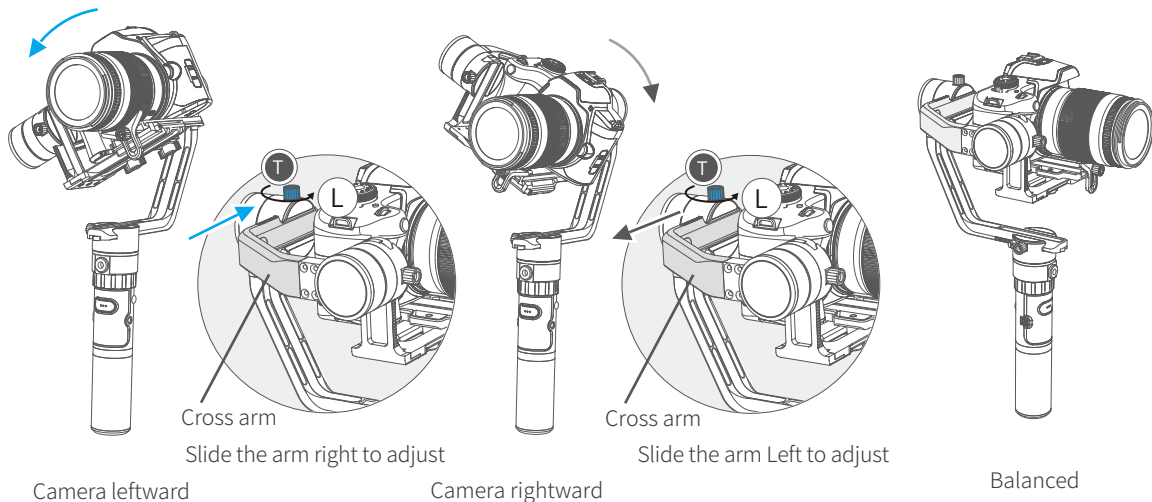


STEP 2 Balance adjustment of the rolling axis

Adjust the center of gravity of the camera's horizon position in rolling axis, after the adjustment of the center of gravity in tilting axis: Let the arm in the natural state, observe the camera tilt state.

Loosen the lock screw on the rolling and slide the cross arm left and right to adjust. (See below)

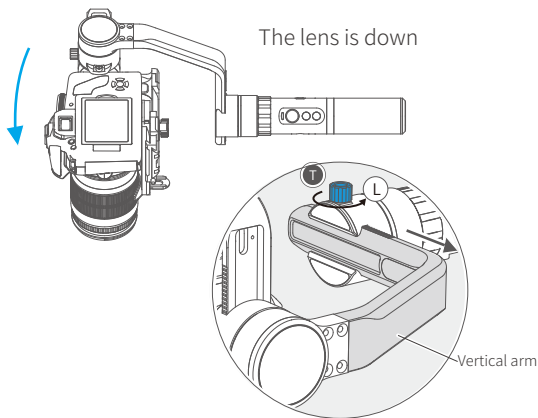
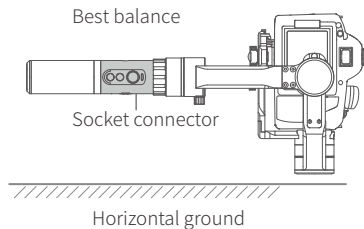
* After adjustment, be sure to tighten the lock screw.



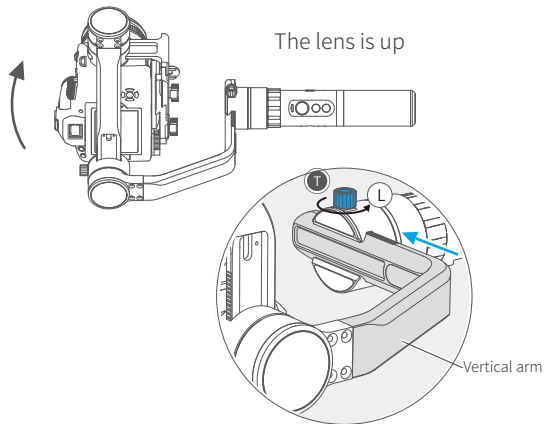
STEP 3 Balance adjustment of the panning axis

Adjust balance of the panning after the balance adjustment of the tilting and rolling. Keep the gimbal socket connector to the horizontal ground (see figure on the right), observe the camera status after letting go. Loosen the locking screw on the panning and slide the arm forward and backward to adjust.

* After adjustment, be sure to tighten the lock screw



Slide the arm backward to adjust



Slide the arm forward to adjust

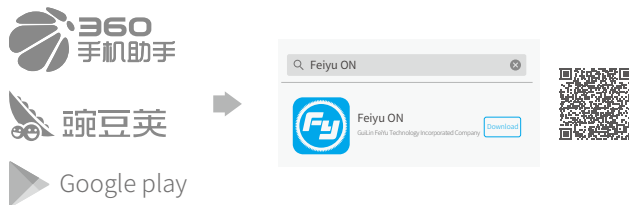
7. Download and connect APP

1 Download "Feiyu ON" and install it. *Please scan the two-dimensional code via the browser.

(1) IOS version:

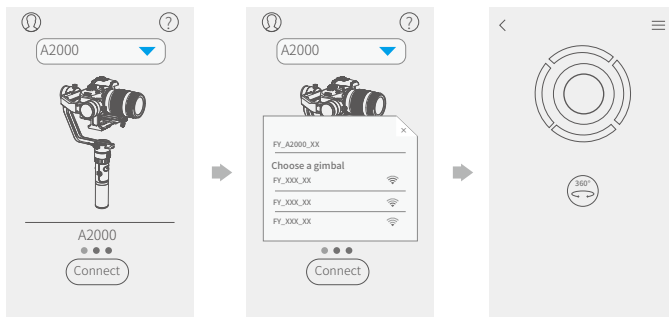


(2) Android version:



2 Connecting APP

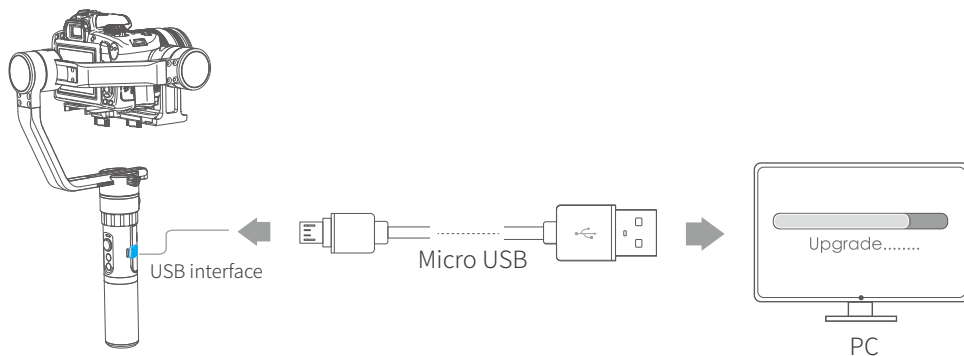
Start the app on your smartphone, follow the instructions to connect the smartphone with gimbal via Bluetooth.



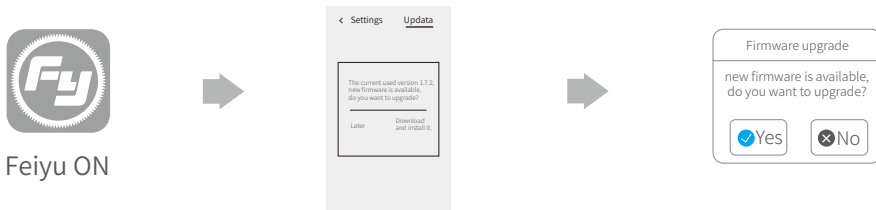
8. Firmware Upgrade

(1) Option 1: connect the gimbal with PC via micro USB cable, and then upgrade the firmware.

Please visit the official website www.feiyu-tech.com to download the relevant software for upgrading, including USB driver, firmware upgrade software and product firmware, and install the relevant software, decompress the firmware files .



(2) Option 2: connect the gimbal with Smartphone via bluetooth, and then upgrade the firmware.



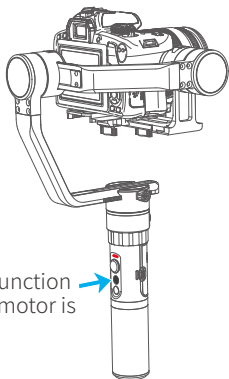
9. Gimbal initialization

You can initialize your gimbal when:

- (1) when camera is not level
- (2) if not used for a long period of time
- (3) in case of extreme temperature variations

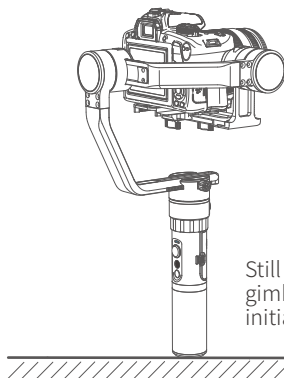
Adjusting steps:

1



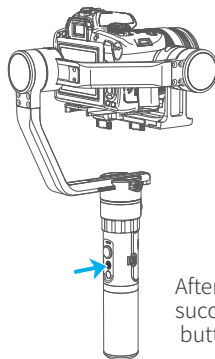
Five batter function button, the motor is turned off.

2



Still placed on the desktop, gimbal is automatically initialized.

3



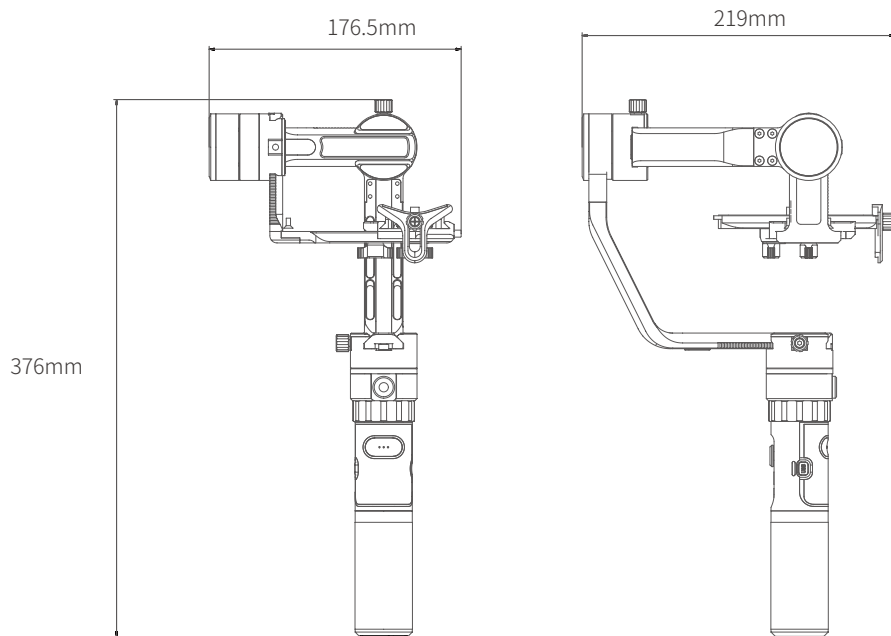
After the initialization is successful, click the function button to wake up.

Note: If the initialization is not successful for a long time, long press the function button to turn off the gimbal, restart it and then initialize.

10. Parameters

Titling Angle	360°
Rolling Angle	360°
Panning Angle	360°
Tilting Increments	2°/s ~ 75°/s
Panning Increments	3°/s ~ 150°/s
Usage Time	6 Hours
Adaption	Sony NEX-5N/NEX-7 and other N-series, SONY A7RII / ILCE-7R / ILCE-5100, Panasonic LUMIX GH4, Canon 5D Mark III (with standard lens), and other cameras with similar dimensions with weight less 1630g (The camera weight including the accessories of lens and ect.)
Weight	720g(Not including the accessories of batteries,camera,camera lens and ect.)

11. Parameters



DISCLAIMER

Prohibit any user for any illegal purpose. Users will be responsible for all behaviors of purchase and use products.

The Company assumes no liability for any risks related to or resulting from the debug and use of this product (including the direct, indirect or third-party losses).

For any unknown sources of using, we will not be at any services.

The updating and changes of product firmware and program may cause changes in function descriptions in this user manual, please read the instructions carefully before upgrading the firmware and use the corresponding user manual.

You can get the latest user manual from the official website: www.feiyu-tech.com

Feiyu Tech reserves the right to amend this manual and the terms and conditions of use the gimbal at any time.

Attention

- Please correctly assemble the gimbal in accordance with the diagram.
- Please install the phone before powering on the gimbal.
- When the gimbal is not in use or placed on the table, please ensure it is powered off.

GuiLin FeiYu Technology Incorporated Company

Website: www.feiyu-tech.com

E-mail: service@feiyu-tech.com

Tel: +86 (0)773 2320866

Due to software and hardware improvements, your actual product might differ from the descriptions and pictures in this user manual. You can get the latest user manual from the official website.

For more information, please visit our official website

